



identity and access management



Aunex0 is a comprehensive identity management platform that allows developers to add authentication and authorization features to their applications with ease. This document outlines the key features, components, and specifications of the Aunex0 platform.

AuNEXO is the ultimate solution for modern identity management, providing unparalleled authentication, authorization, and user management capabilities. With its intuitive interface and powerful features, **AuNEXO** simplifies the complexities of identity security, ensuring seamless integration and enhanced application protection.

The Requirement of an IAM

Currently there are a vast number of **organizations** controlling even **larger number of branches** or locations
each of these organizations **employ hundreds of employees** with **numerus digital assets**

these people also hold **roles** that Define the **level of access** that they can get to certain kind digital assets

digital **asset allocation** security and **authorization process** is practically a **nightmare** for the management HR and the IT department



Different Systems Under One Organization



Organizations have **multiple departments** under one organizational roof.

Each of them running **separate systems** makes **authentication** and access management next to **impossible**.

What is IAM?



“IAM is a **framework of multiple policies** that work in parallel **facilitating the management of digital assets and identities.**”

the eventual goal of IAM is to provide single sign on systems, two Factor authentication, multifactor authentication and privilege access management”

The Nightmare

Top management of organizations and IT departments are **under constant** Regulatory and organizational **pressure** to **protect** access to corporate **resources**

As a result they can **no** longer rely on **manual** and error prone **processes**.

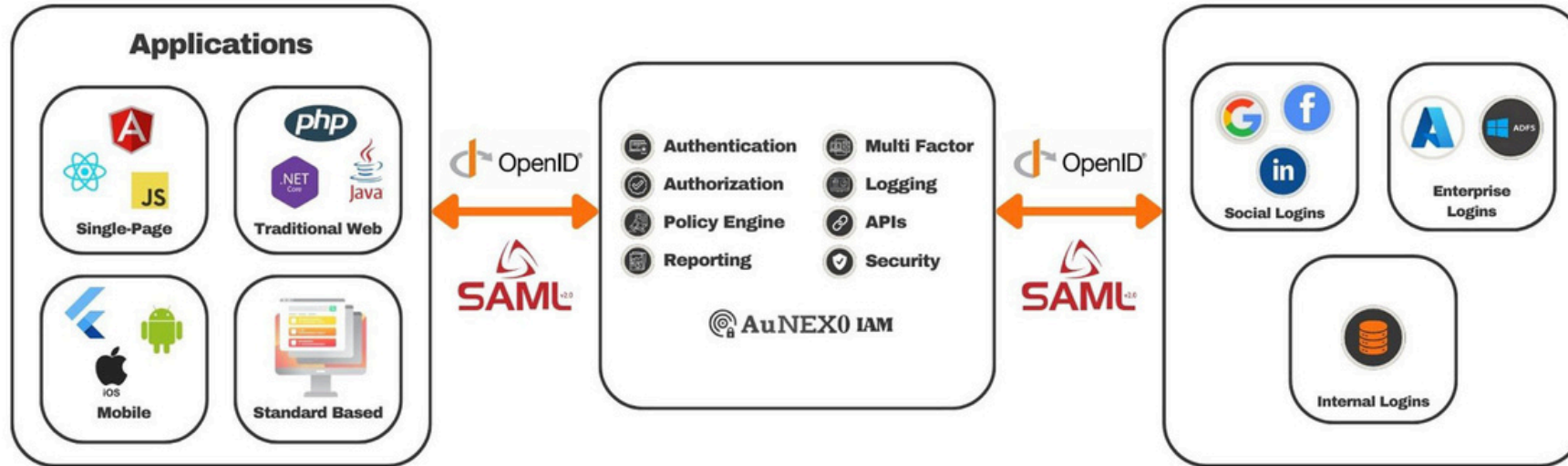




KEY FEATURES

With customizable features and industry-leading security, AuNEX0 empowers organizations to protect user identities and enhance application security effortlessly.

AuNEXO - A Deep Dive



AuNEXO revolutionizes identity management, offering seamless authentication, robust authorization, and comprehensive user management. With customizable features and industry-leading security, **AuNEXO** empowers organizations to protect user identities and enhance application security effortlessly.

OAuth 2.0 Protocol



- **Aunex0 IAM** leverages the **OAuth 2.0** framework to facilitate secure authorization and delegated access to resources.
- It supports **multiple** OAuth 2.0 **grant types** including:
 - Authorization Code
 - Client Credentials
 - Implicit
 - Resource Owner Password Credentials (ROPC).

OpenID Connect (OIDC) Support

- **Aunex0 IAM** extends **OAuth 2.0** with OpenID Connect (**OIDC**) for identity verification and authentication.
- Key capabilities include:
 - User Authentication via ID Tokens
 - Single Sign-On (SSO) for seamless user experience
 - Support for standard claims and user profile management.

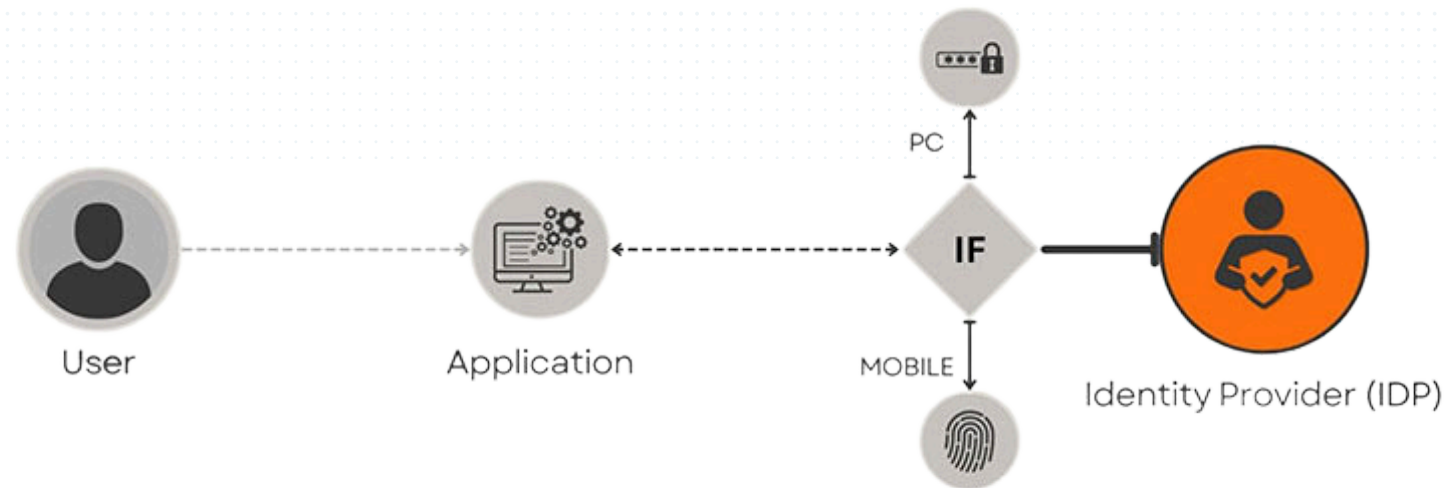


SAML Integration



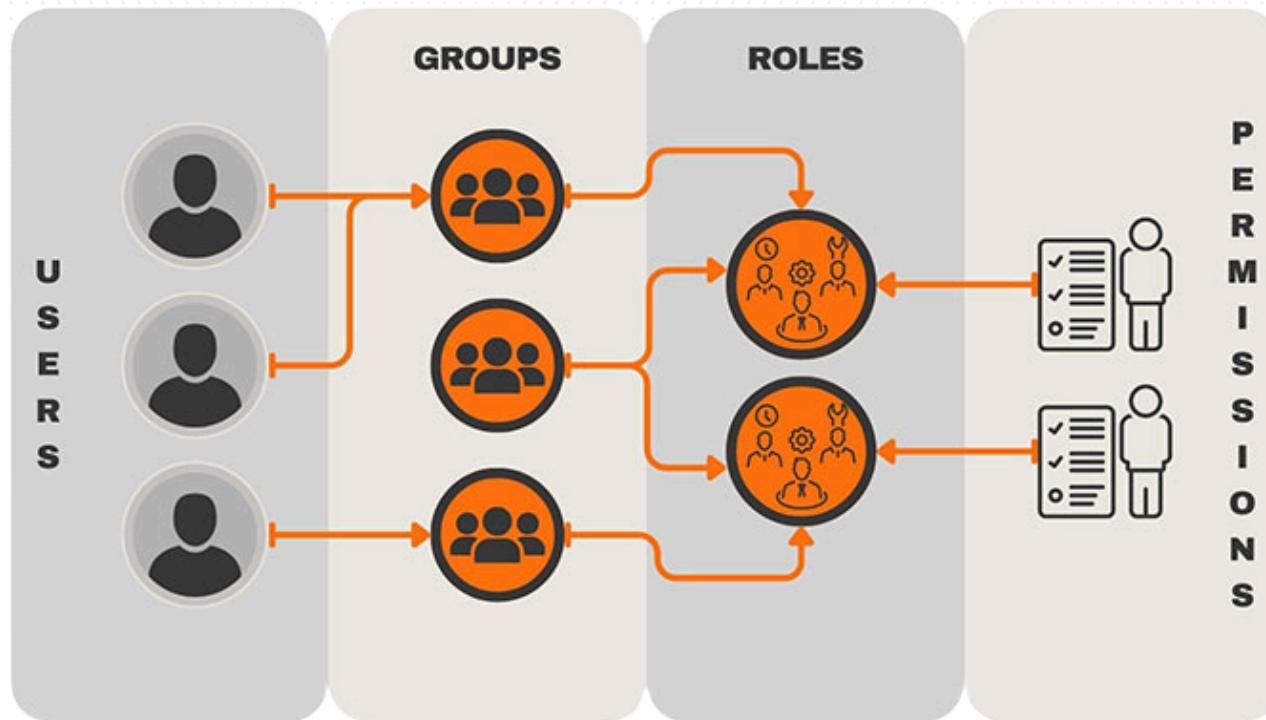
- **Aunex0 IAM** supports Security Assertion Markup Language (**SAML**) for federated authentication and Single Sign-On (**SSO**)
- Organizations can integrate with external identity providers (**IdPs**) or service providers (**SPs**) to enable secure and interoperable authentication across systems.

Flexible Authentication Options



- **Multi-factor Authentication (MFA)** with support for OTPs, biometrics, and other verification methods.
- Support for password less authentication to improve user convenience and security.

Centralized User Management



- Provides a **centralized platform** to manage users, roles, and permissions.
- Role-Based Access Control (**RBAC**) and fine-grained permission management.

Support for Diverse Authentication Platforms



Aunex0 IAM supports integration with various authentication platforms, including:

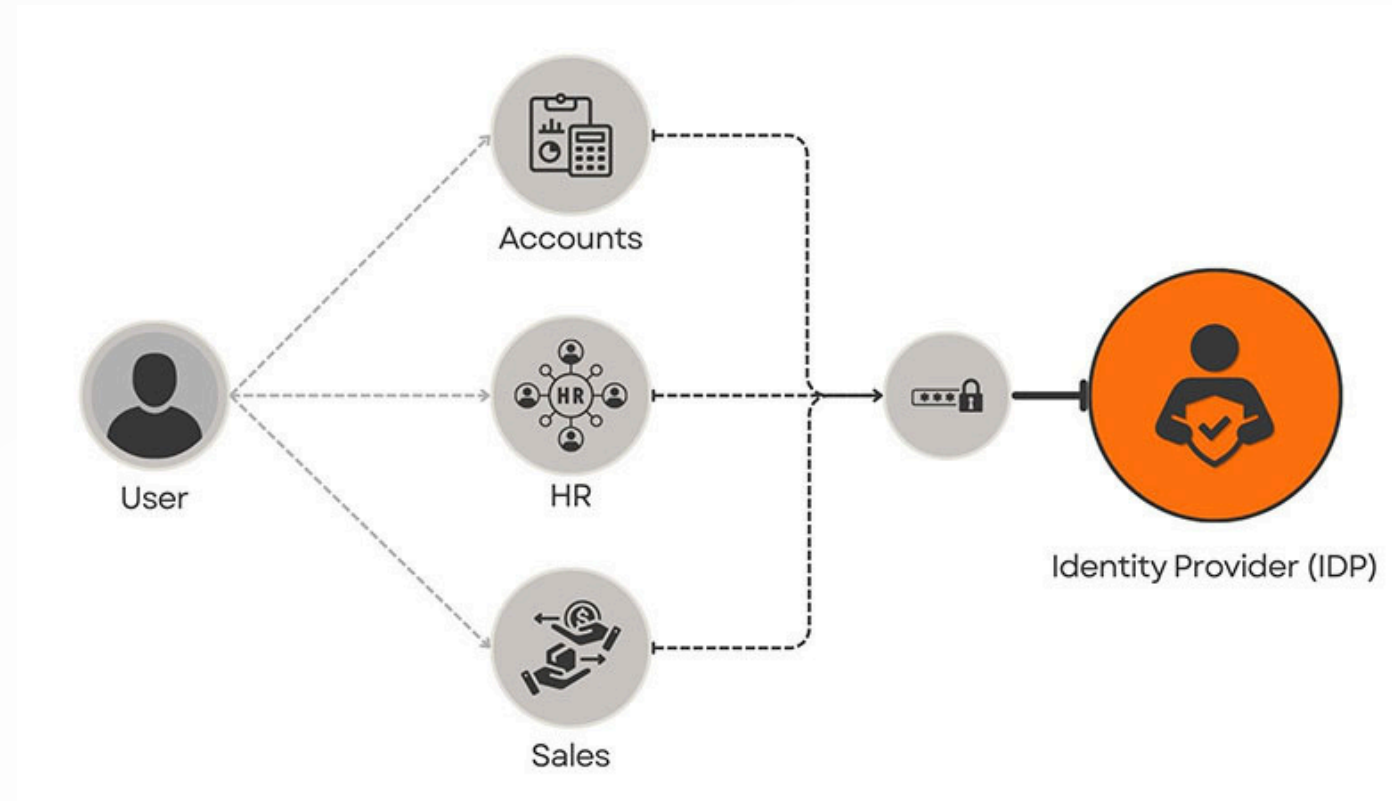
- **Social Logins:** Authenticate users through social identity providers like Google, Facebook, and LinkedIn.
- **Federation Logins:** Integrate with external Identity Providers (IdPs) using SAML and OIDC for cross-organization authentication.
- **In-House Databases:** Support custom authentication through in-house user repositories and databases.

Integration

AuNEXO IAM seamlessly integrates Finance Systems, HR platforms, Sales applications, and any other system using both **OIDC** and **SAML** protocols.

This ensures **centralized control** over **user access** and **permissions**, enhancing security and streamlining management processes.

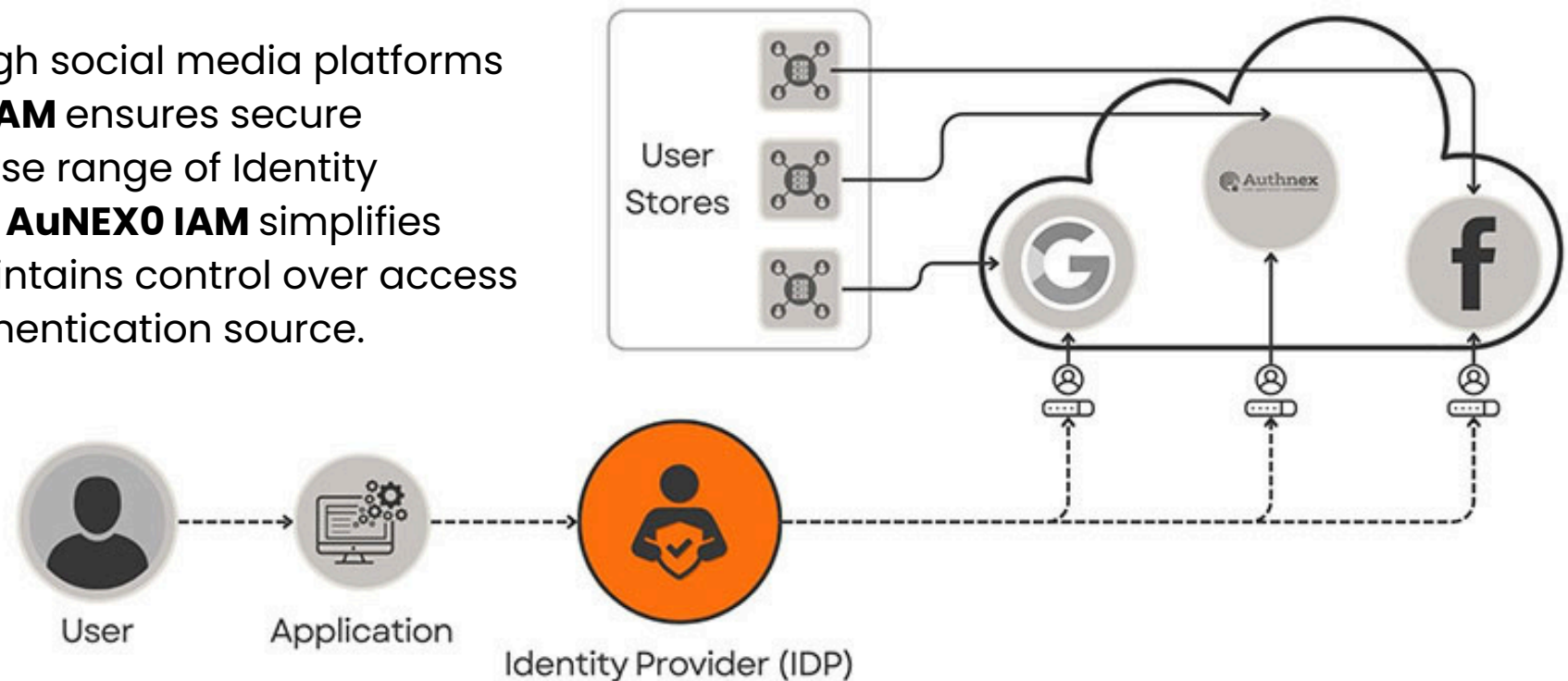
Whether accessing financial data, HR information, or sales tools, **AuNEXO IAM** offers secure and efficient connectivity. Its versatility empowers organizations to deliver a unified user experience across all departments. Supporting OIDC and SAML, AunexO IAM adapts to modern enterprise needs, ensuring compatibility and flexibility in application integration.



Identity Integrated Seamlessly

AuNEXO IAM effortlessly connects with **Internal and External Identity Providers**, such as Google, Facebook, and **Federation services** like Azure AD or Active Directory. This versatility enables organizations to consolidate user access management across various authentication sources.

Whether users authenticate through social media platforms or enterprise directories, **AuNEXO IAM** ensures secure connectivity. By supporting a diverse range of Identity Providers and Federation services, **AuNEXO IAM** simplifies authentication processes and maintains control over access permissions, regardless of the authentication source.



SECURITY

AuNEX0's comprehensive security suite includes advanced measures such as BOT Detection, Suspicious IP Throttling, Brute-Force Protection, and Breached Password Protection.



Unparallel Security Measures



**Bot
Detection**



**Suspicious
IP Throttling**



**Brute-Force
Protection**



**Breached Password
Protection**

BOT Detection employs cutting-edge algorithms to identify and neutralize automated bot attacks in real-time, bolstering defense against malicious activities.

Suspicious IP Throttling restricts access from IPs displaying suspicious behavior, preemptively mitigating potential risks.

Brute-Force Protection safeguards against brute-force attacks by limiting login attempts and deploying CAPTCHA challenges.

Breached Password Protection monitors and blocks compromised credentials, thwarting unauthorized access attempts. With Authnex's robust security solutions, organizations can confidently protect their data and infrastructure from evolving cyber threats, ensuring uninterrupted operations.

BENEFITS

AuNEX0 with its Improved Security, Scalability, Seamless Integration & Enhanced User Experience provide users an unparalleled IAM solution



The Unchallenged Benefits Of AuNEX0



Improved Security

Ensures secure access with OAuth 2.0, OIDC, and SAML protocols.



Seamless Integration

Easily integrates with modern and legacy applications.



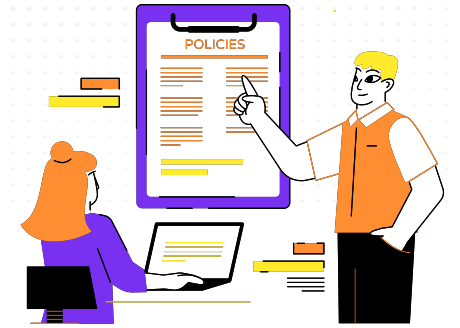
Scalability

Designed to scale for enterprises of any size.



Enhanced User Experience

Simplified authentication with SSO and MFA.



Regulatory Compliance

Supports audit trails and compliance with security standards.

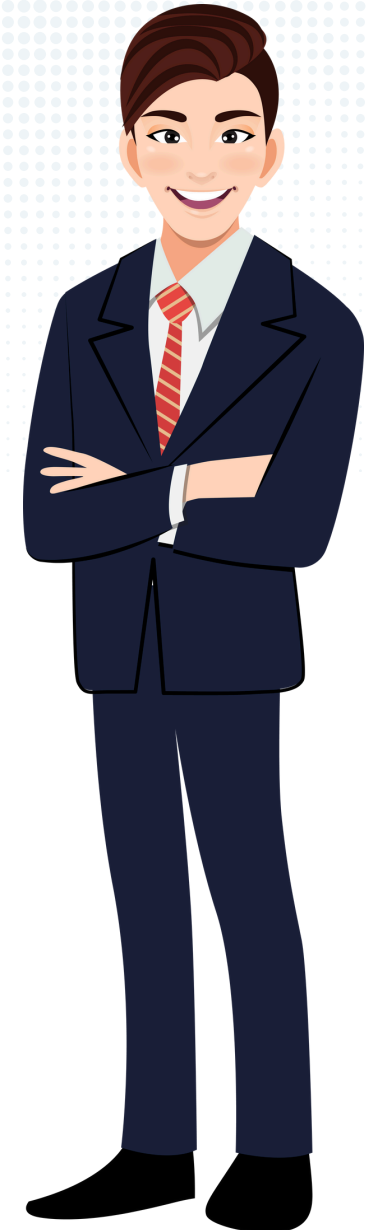
Projected Use Cases

- **Enterprise Single Sign-On:** Allow employees to log in to multiple systems with one set of credentials.
- **Secure API Gateway:** Enable secure API access for third-party applications using OAuth tokens.
- **Customer Identity Management:** Authenticate and manage customer identities securely.
- **Federated Authentication:** Integrate with external IdPs for seamless user authentication.
- **Isolated Systems with Multiple Credentials:** Organizations with isolated legacy systems often require users to maintain separate credentials for each system. Authnex IAM centralizes authentication, enabling a unified login experience while securely integrating isolated systems with modern identity protocols.



Projected Use Cases

- **Cross-Organization Collaboration:** Businesses working with partners or external vendors can use Aunex0 IAM to federate authentication across systems while maintaining security and access control.
- **Secure Access for Remote Workers:** Provide remote employees with secure, unified access to enterprise systems and cloud-based applications using OAuth 2.0 and SAML.
- **Social Login Integration:** Enable users to authenticate using their existing social media credentials (e.g., Google, Facebook), reducing friction and enhancing user experience.
- **In-House User Repository Integration:** Seamlessly connect to internal databases and custom user management systems for authentication.



Contact Information



Hemanthi Olagasekaram

Manager - Business Development

Mobile : + (94) 77 1454953

E-Mail : hemanthi@flix11.com

No 9, N J V Cooray Mawatha,
Rajagiriya,
Sri Lanka.

Telephone: +94 (0) 11 4700555

Mobile: +94 (0) 77 5846373

E-Mail: info@authnex.com

Web: www.authnex.com

